

Alumalight LED fixtures are engineered and built in the USA and can go toe to toe with any manufacturer in the world as far as efficiency (lumens per watt), quality of build, and useful life expectancy. Alumalight sources only the finest components for a premium value to customers who are looking at quality versus a cheaply made lower cost fixture,

(which can become costly in the long run). Our patented Tog-L-Loc system means no rivets, providing a more solid build, a more durable luminaire. Also our .040-gauge aluminum keeps our electronics cooler, which makes the lights burn brighter and extends the life of the driver.

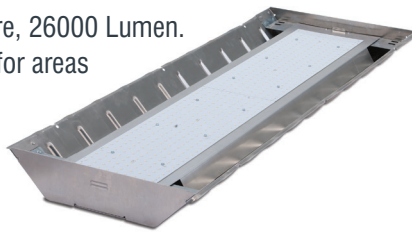
Alumalight Fixtures are available in both LED and Fluorescent. Please call for options and quotes.

LED / ALUMALIGHT INDUSTRIAL FULL BODY HIGH BAY

LED Full Body Conversion Kit (Panel Only)

AL-LED-26-5.0K

Full Body Aluminum Fixture, 26000 Lumen. Steel Fixtures are offered for areas where aluminum fixtures are not required such as low caustic areas and are economically priced.



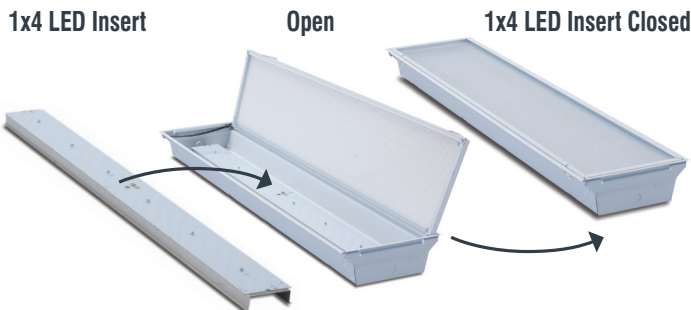
***Note:** Alumalight uses premium LED panels NOT Bulbs. Our Aluminum and Steel Fixtures can also be purchased as a Double Wide fixture offering. Supplying up to 60000 lumens. Other lumen packages also available, call factory for options.

LED / RETROFIT KIT

Alumalight 1X4 LED Troffer Retrofit

RK-LED-1X4 PANEL

This product is available in a 1x4 or 2x4 configuration. Designed for 1x4 or 2x4 ceiling troffers and attaches to the existing metal frame. Lens optional for parabolic louvers. Multiple lumen packages also available, call factory for options.

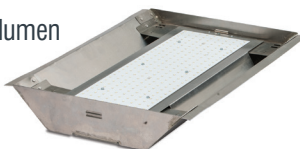


LED / HIGH / LOW BAY

Alumalight Aluminum Short 2x2 LED

ALS-LED-13000 5.0K

Aluminum Short Fixture using 13000 lumen packages. Great for inspection areas with visually demanding tasks as well as critical work areas.



ALUMABEAM LED HIGH BAY

LED Alumabeam Conversion Kit (Panel Only)

I-LED-26-5.0K

26000 Lumen 200W LED High Bay made with .040 aluminum and ventilated for better heat dissipation.



Made in Michigan with 203,000 hours' life at 55C. UL and DLC listed, 120-277V Aircraft cable hanging kit available.

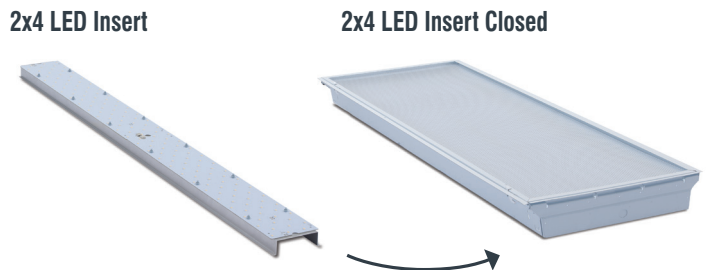
Other lumen packages also available, call factory for options.

LED / RETROFIT KIT

Alumalight 2x4 LED Troffer Retrofit

RK-LED-2X4 PANEL

This product is available in a 1x4 or 2x4 configuration. Designed for 1x4 or 2x4 ceiling troffer and attaches to the existing metal frame. Lenses optional for parabolic louvers. Multiple lumen packages also available, call factory for options.



OFFICE TROFFER

AcraLite 2x2 Office Troffer Office Troffer

AL22CT-HO-4.0/5.0K

The AcraLite 2x2 Ceiling troffer produces 4,730 lumens of quality light. Fits standard suspended ceilings with 1" or 5/8" rails.



■ Office ■ Schools ■ Libraries ■ Retail ■ Hospitals

Alumalight Fluorescent fixtures are engineered and built in the USA and are offered as an alternative to offshore fixtures which typically run hotter and can fall apart due to cheaper manufacturing methods and materials. Our patented socket bridges provide a quicker and more flexible manufacturing process which in turn allows us to offer more value to our customers.

Our patented Tog-L-Loc system enables us a more durable and easier to manufacture luminaire. Our quality components and accessories mean we can meet the lighting demands of all warehouse, light commercial and industrial applications. Finally Alumalight uses Miro 4 reflectors with a 25-year warranty for maximum light reflection and optimum light output.

Alumalight Fixtures are available in both LED and Fluorescent. Please call for options and quotes.

FLUORESCENT / HIGH BAY INDUSTRIAL

Alumabeam Fluorescent Fixture

Our Most Popular Fixture!

I-T5-X # I-T8-X

(X = Number of Bulbs)

- Available 120-277, 480V, PS or IS ballasts.
- Designed 2x4 Fixture (I-Shaped) well vented fixture, 4 to 8 lamps with Miro 4 Reflector.
- Easy ballast and wiring access using less material for more economical cost.



FLUORESCENT / HIGH BAY INDUSTRIAL

Alumalight Full Body Fixture

AL-T5-X # AL-T8-X

(X = Number of Bulbs)

- Standard 2 X 4 Vented Fixture available in 4 to 8 Lamp configurations using T5 or T8 Fluorescent Lamps and Miro 4 Reflector Fixture.
- Easy ballast and wiring access using less.
- Optional steel fixture housing for non-caustic areas brings a more economical cost.
- Available in 120-277, 480V PS or IS ballasts.



FLUORESCENT / HIGH BAY INDUSTRIAL

Alumalight Double Wide Fixture

ALW-T5-X # ALW-T8-X

(X = Number of Bulbs)

- 8 to 12 Lamp Fixtures with Miro 4 Reflector, connected for optimum light.
- Available in 120-277, 480V PS or IS ballasts.
- Built with T5 or T8 lamps.
- Alumalight Double-wide Fixtures also offered in steel fixture housing for non-caustic areas brings a more economical cost.



Alumalight Vapor Tight fixtures are engineered for the most demanding industrial environments: wash-down, wet, floating debris and are available with a poly lenses or tempered glass. Alumalight's Vapor Tight fixtures are available in LED or Fluorescent T5 and T8 we have a Vapor Tight solution to

match your facility and budget. Alumalight Citadel fixtures are made with a variety of materials, fiberglass, acrylic, glass and PE, we know we have a solution for you. Because we run cooler on the inside we can make our exterior stand up to your environment.

Alumalight Fixtures are available in both LED and Fluorescent. Please call for options and quotes.

VAPOR TIGHT / INDUSTRIAL

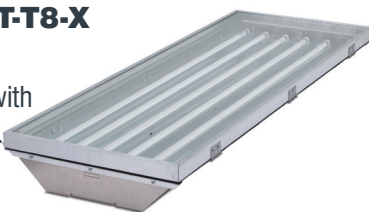
Alumalight Vapor Tight Fixture

ALVT-T5-X # ALVT-T8-X

(X = Number of Bulbs)

Available in 120-277, 480V with IS or PS ballasts. IP66 Rated. Wet Approved. Standard 2x4 Ventless Fixture with Poly or Tempered Glass Cover. For harsh industrial environments.

Options: 2-8 Lamp T-5 or T-8. Also offered in a Double-wide fixture.

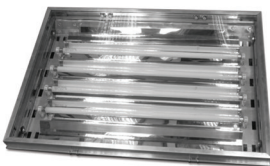


VAPOR TIGHT FLUORESCENT HIGH / LOW BAY

Aluminum Short 2x2 Fixture

ALVTS-T5 or T8

Aluminum Short Vapor Tight Fixture using 2, 4 or 6 lamps with Miro 4 Reflector. Great for inspection areas, visually demanding tasks and critical work areas. LED panel is also available, call factory for options.



FLUORESCENT VAPOR TIGHT IP RATED / FOOD, BEVERAGE

Citadel 2x4 Vapor Tight Fluorescent Fixture

VT4-T5-X-CT (X = Number of Bulbs)

4-Foot-Long, Vapor Tight. IP66 Rated.

Wet Approved.

Fiberglass construction, clear and diffused lenses available.

For any cold, wet or harsh environment.

Also available as LED, call factory for other options.



APPLICATIONS

- Food Processing Facilities
- Commercial Kitchen
- Breweries
- Industrial Facilities
- Livestock Containment Buildings
- Laundries
- Car Washes
- Stair Wells
- Car Washes
- Car Ports

ALUMALIGHT LED and FLUORESCENT VAPOR TIGHT / IP RATED / FOOD and BEVERAGE

Citadel LED 1x4 Fixture

VT1-4-LED-6.5-4.0K (or 5.0K)

4-Foot-long, 130 LPW, Vapor Tight. IP66 Rated. Wet Approved.

Fiberglass construction, clear and diffused lenses available.

For any cold, wet or harsh environment.

Also available in T5 or T8, call factory for options.



Citadel LED 1x8 Fixture

VT-1x8-LED-13.0-4.0K or 5K

8-foot-long, 130 LPW, Vapor Tight. IP66 Rated. Wet Approved.

Fiberglass construction, clear and diffused lenses available.

For any cold, wet or harsh environment.

Also available with T5 or T8, call factory for options.



APPLICATIONS

- Food Processing Facilities
- Commercial Kitchen
- Breweries
- Industrial Facilities
- Livestock Containment Buildings
- Laundries
- Car Washes
- Stair Wells
- Car Washes
- Car Ports

Sometimes you need a light to go where your work is and our **Alumalight Task Lights** will be up to the challenge! Available in LED and fluorescent, mounted on mobile carts, or with handles, with IP66 rated enclosures.

Our lights are overbuilt for dependability and will give you what you're need when called upon. Give Alumalight a call and ask for a specialist.

Task lights can be assembled as Fluorescent or LED. Please call for options and quotes

ALUMALIGHT PORTABLE TASK LIGHTS / WORK LIGHTS / MOBILE LIGHTING CARTS

Alumalight 1X2 ALVT Flood Light

ALUMAX-T5-X

(X = Number of Bulbs)

Hand held Task and Flood Lights come in an assortment of sizes and housings, and are designed for multiple applications.

Add a handle for carry.

Also available in LED, call the factory for options.



Alumalight 1X4 Task Light Standing

ALUMAX-T8-X

(X = Number of Bulbs)

Hand held Task and Flood Lights come in an assortment of sizes and housings, and are designed for multiple applications.

Add a handle for carry.

Also available in LED, call the factory for options.



Alumalight 2x2 Task Light

ALVTSHH-T5-X

(X= Number of Bulbs)

Premium task light with superior lumen package, meets the demands where concentrated light is needed.

Alumalight Task Lights are suitable for harsh industrial environments.

Alumalight 2x2 Task Light is shown with handle and wire guard.

Also available in LED, call factory for options.



Alumalight Heavy Duty Mobile Carts

Flood Combo Task Lights and Floods

AL-VT-2x4-Cart

AL-VT-2x2-Cart

Alumalight mobile carts are heavy duty and meet ALL rigorous requirements.

Available in 2x2 or 2x4, T5, T8, or LED, 120-277V.

Lenses and wire guards also available.

APPLICATIONS

- Body Shops
- Studios
- Warehouse, Plants and Factories
- Steel, Stamping and Fabrication
- Out Door Night Lighting

Configured to customer's needs, call factory for options.

