

T9-MH-XL-DIRECT with Lens

The **MH-XL-Direct** mount fixture comes with **Patented Super Reflector Technology** which produces at least 20% more light than any other fixture. It is perfect for lighting manufacturing and industrial facilities with ceiling 15 to 110 feet high.

Description

T9 Ceramic Metal Halide direct fixture with universal T9-30,000 hour lamp and 60,000 hour dimmable electronic ballasts comes pre-wired and assembled.

- A 24" Aluminum outer housing with high temperature polyester powder coat contains our Patented Super Reflector Technology with a Luminaire Efficacy Rating (LER) 95%.
- Comes with T9 lamp, ballasts mounted in attached ballast enclosure with a swivel ball cover for hook or pendent mount, cord and plug.
- Available with a tempered glass lens.
- For Open Rated fixture use the T12 lamp with outer jacket.
- Standard voltage 200 to 480 volt.
- Weight 30 lbs.
- For more light than a 1000 watt HID use the Duel Lamp T9-630 watt. For a 1500 watt HID replacement use the T9-945 watt.
- Five year warranty on housing and reflector.



ArcelorMittal Marion. We replaced 1000W High Bay Lights with 630W and 315W Best Lights Fixtures. **\$88K Per Year in Electrical Savings – More Light – Two Thirds Less Maintenance.**

T9-MH-XL-DIRECT Ordering Information: (Example: T9-MH-XL-DIR/210W/T9/LI/GL/HCP/W6/L7-15P)

Lamp	Specify Voltage	Fixture Body	Whip & Plug	Options
210 T9 or T12	200 to 480	Aluminum AL	3' W3	Lamp Included LI
315 T9 or T12			15 Amp 277V L7-15P	Wire Guard WG
420 T9 or T12				Tempered Glass Lens GL
630 T9 or T12				Hook, Cord & Plug HCP
				Emergency Restrike ER



T9
Lamp

T12 Open
Rated Lamp



PATENTED

www.bestlights.com

UL Underwriters
Laboratories, Inc. c
Listed
Approved for damp locations.

100 Park Drive, Troy, Michigan 48083 ■ Ph: (248) 588-4980 ■ Fx: (248) 589-0134 ■ Toll Free (US Only) ■ (800) KIL-A-WAT (545-2928)



BEST Lights are made in America

T9-MH-XL Low Profile

The **T9-2' x 2' x 6" Low Profile** can be used in a **DIRECT or INDIRECT** application. This fixture can be hung by cables and is perfect for lighting Sports and Conventional Buildings 15 to 90 feet high.

The **T9-630 watt model** replaces all existing 1000 Watt fixtures with a **37% energy savings and more light**.

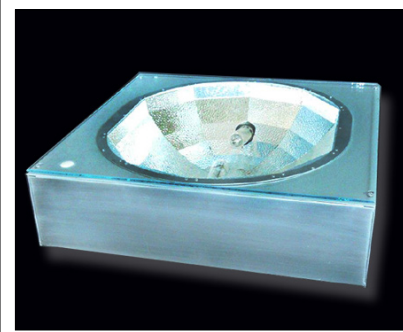
T9 Ceramic Metal Halide Lamps last 30,000 hours which is twice the life of existing HID lamps. Lamp depreciation at 12,000 hours is only 10%.

The Color Rendering Index is 90+ which means the lamp color is consistent with no color shifting.

They are easy to install and the electronic ballasts are integral and dimmable.

Description

- 24" x 24" x 6" Steel housing with **Best Lights Patented Super Reflector Technology**.
- Two T9 lamps with two integral 200 to 480 volt electronic dimmable ballast.
- Tempered Glass Lens.
- Fixture comes prewired and ready to install.
- Standard voltage 200 to 480 volt.
- Powder coated white or color.



MSU Engineering Library – using only 60 - 420 Watt fixtures for a **50% Energy Savings**, they increased light levels from 38 FC to 86 foot-candles.

T9-MH-XL-2 x 2 Low Profile		Ordering Information: (Example: T9-MH-XL-LP/420W/ST/6W/LI/GL/HK6)							
Lamp		Specify Voltage	Specify Fixture		Whip & Plug		Options		
T9-210W	1-T9 Lamp	200 to 480	Steel	ST	6'	W6	Lamp Included	LI	
T9-315W	1-T9 Lamp		Aluminum	AL	8'	W8	Glass Lens	GL	
T9-420W	2-T9 210 Lamps				12'	W12	Cable Mount Hanging Kit	HK	
T9-630W	2-T9 315 Lamps				20'	W20			
					15 Amp 277V	L7-15P			
								6'	
								8'	
								10'	
								12'	



T9 Lamp



PATENTED

www.bestlights.com

UL Underwriters Laboratories, Inc. c UL
Approved for damp locations.

100 Park Drive, Troy, Michigan 48083 ■ Ph: (248) 588-4980 ■ Fx: (248) 589-0134 ■ Toll Free (US Only) ■ (800) KIL-A-WAT (545-2928)



BEST Lights are made in America

T9-MH-XL-DIRECT with Lens

The **MH-XL-Direct** mount fixture comes with **Patented Super Reflector Technology** which produces at least 20% more light than any other fixture. It is perfect for lighting manufacturing and industrial facilities with ceiling 15 to 110 feet high.

Description

T9 Ceramic Metal Halide direct fixture with universal T9-30,000 hour lamp and 60,000 hour dimmable electronic ballasts comes pre-wired and assembled.

- A 24" Aluminum outer housing with high temperature polyester powder coat contains our Patented Super Reflector Technology with a Luminaire Efficacy Rating (LER) 95%.
- Comes with T9 lamp, ballasts mounted in attached ballast enclosure with a swivel ball cover for hook or pendent mount, cord and plug.
- Available with a tempered glass lens.
- For Open Rated fixture use the T12 lamp with outer jacket.
- Standard voltage 200 to 480 volt.
- Weight 30 lbs.
- For more light than a 1000 watt HID use the **630 watt T9 MH-XL-Direct** as seen in photo. Replace 400 Watt HID with T9-210 Watt.
- Five year warranty on housing and reflector.



R.L. Polk Hangar. Our T9-210 Watt MH-XL-Direct on 20' x 25' spacing at 26' high produce 70 Foot-Candles. We **replaced 400 Watt HID** for a **50% Energy Savings** and **more light**. 50% dimmable 30,000 hour lamp with a 10% light loss at 12,000 hours.

T9-MH-XL-DIRECT		Ordering Information: (Example: T9-MH-XL-DIR/210W/T9/LI/GL/HCP/W6/L7-15P)						
Lamp		Specify Voltage	Fixture Body		Whip & Plug		Options	
210	T9 or T12	200 to 480	Aluminum	AL	3'	W3	Lamp Included	LI
315	T9 or T12				6'	W6	Wire Guard	WG
420	T9 or T12				9'	W9	Tempered Glass Lens	GL
630	T9 or T12				15 Amp 277V	L7-15P	Hook, Cord & Plug	HCP
						Emergency Restrike	ER	



PATENTED

www.bestlights.com

UL Underwriters Laboratories, Inc. c UL
Approved for damp locations.

100 Park Drive, Troy, Michigan 48083 ■ Ph: (248) 588-4980 ■ Fx: (248) 589-0134 ■ Toll Free (US Only) ■ (800) KIL-A-WAT (545-2928)



BEST Lights are made in America